

SH▲W HOUSE

COLOURING BOOKLET

THIS BOOKLET BELONGS TO

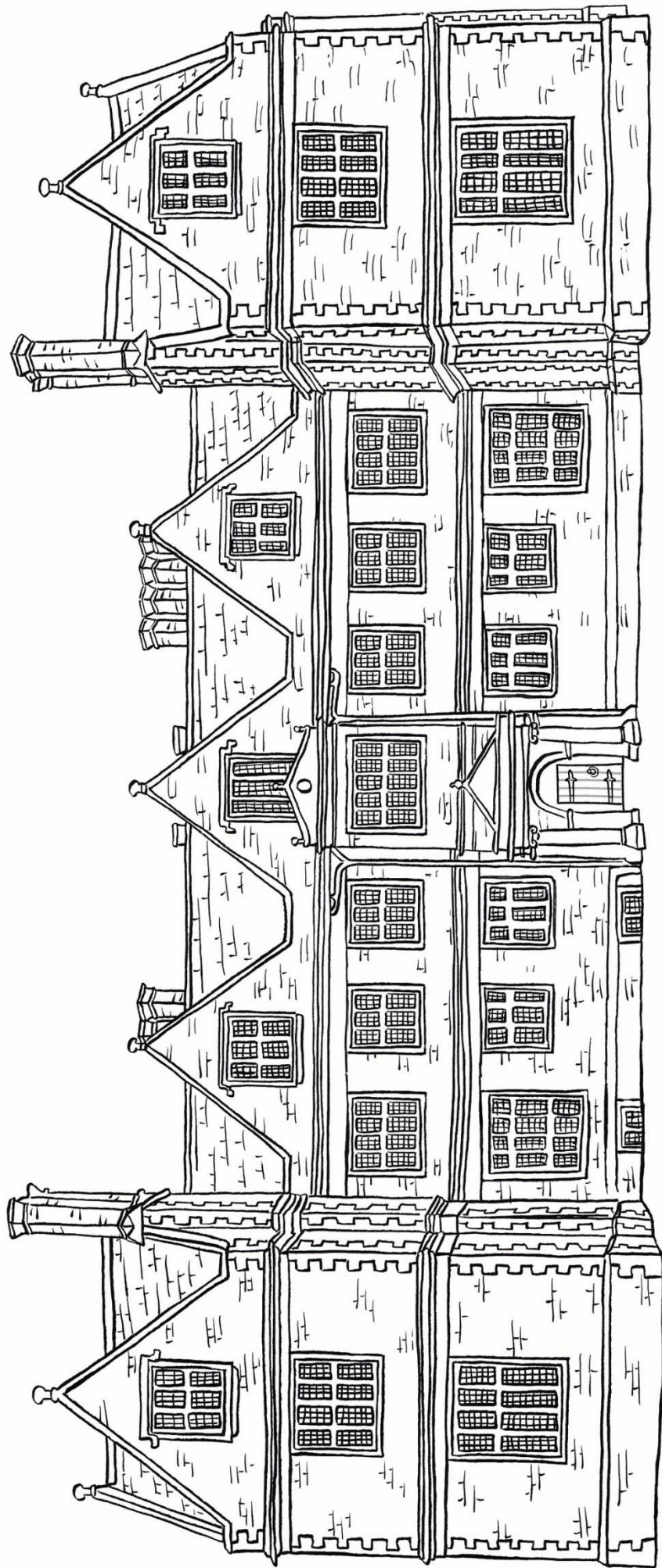





**SHAW HOUSE WAS
BUILT IN 1581 WHEN
QUEEN ELIZABETH 1
WAS ON THE THRONE.**

**THE HOUSE WAS BUILT
FOR THOMAS DOLMAN,
A WEALTHY NEWBURY
CLOTH MERCHANT.**

**SHAW HOUSE REMAINED
A PRIVATE FAMILY
HOME FOR 362 YEARS.**



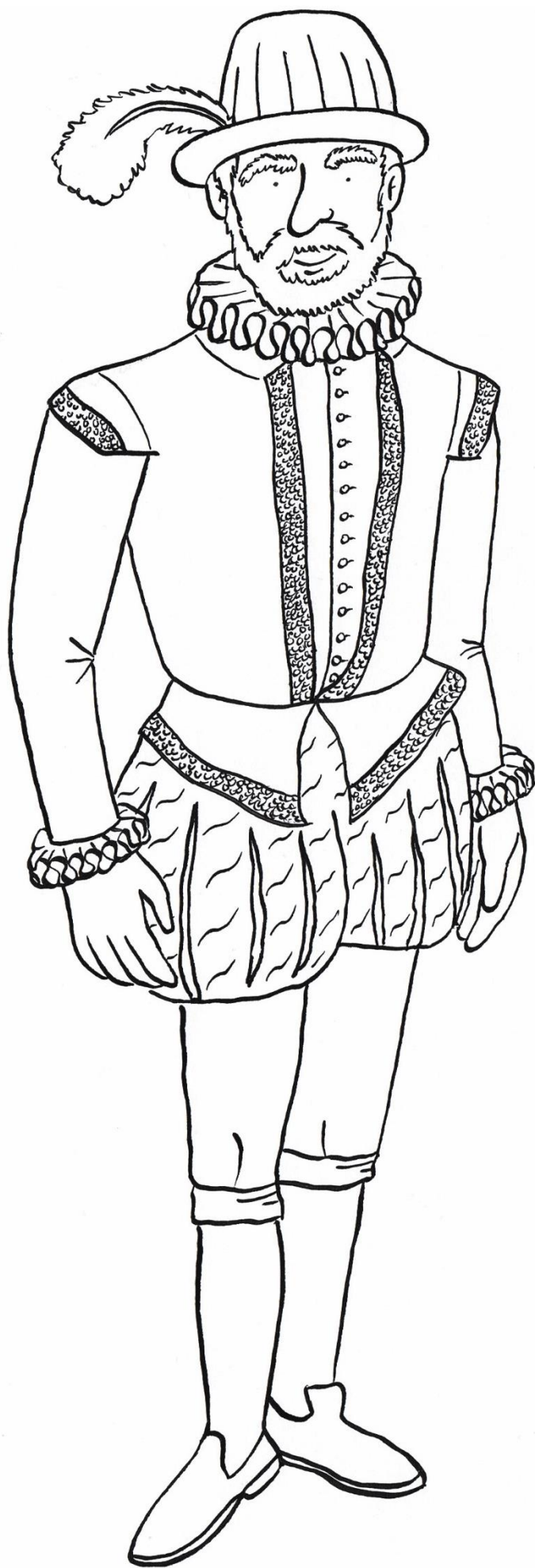


THE DOLMAN FAMILY WELCOMED
QUEEN ELIZABETH 1 TO SHAW HOUSE
IN AUGUST 1592 AS SHE TOURED THE
SOUTH OF ENGLAND ON HER
ROYAL PROGRESS.

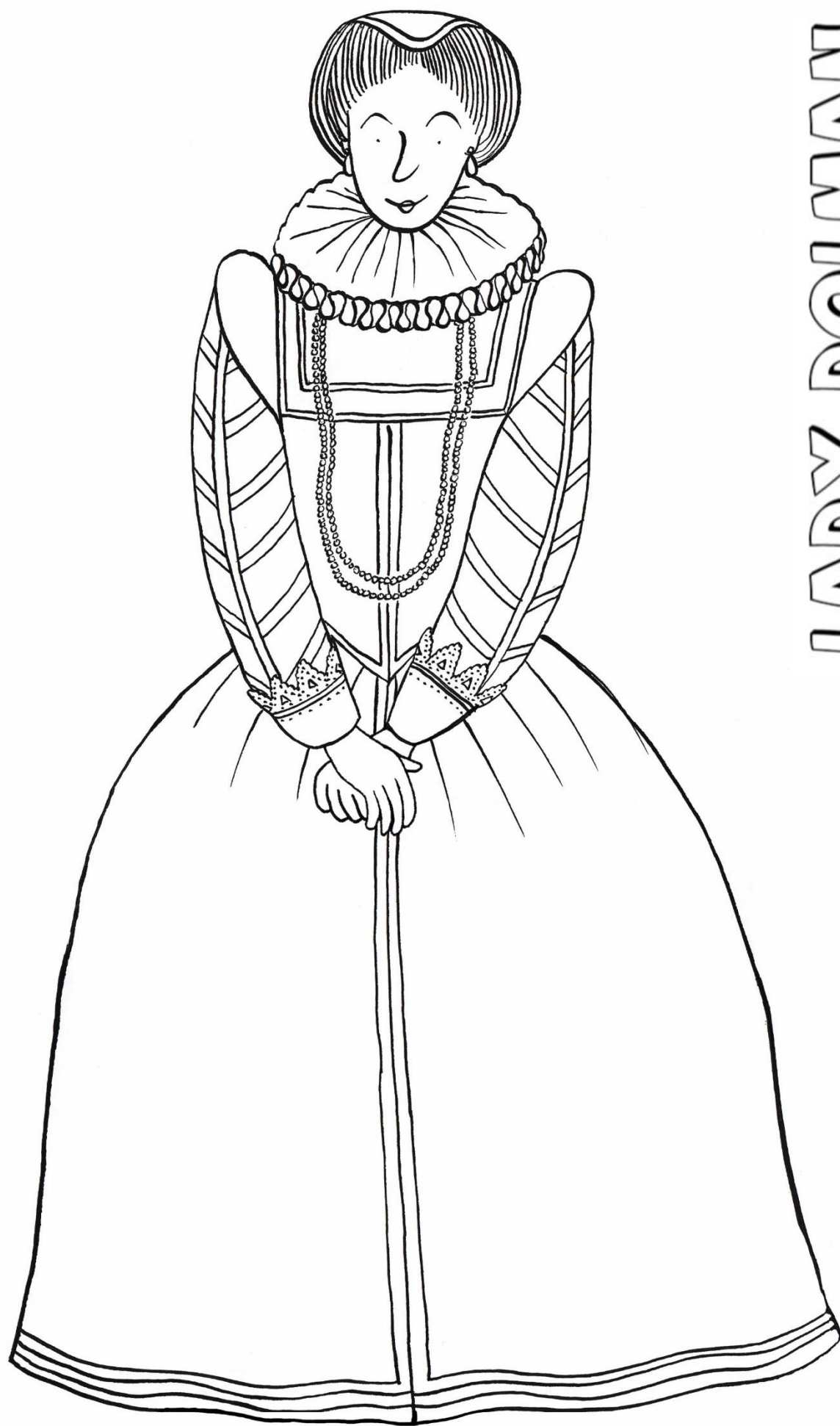
THE QUEEN MADE 23 PROGRESSES
DURING HER 44 YEAR REIGN.
A ROYAL PROGRESS WOULD INVOLVE
THE QUEEN VISITING HER SUBJECTS
TO GIVE AND RECEIVE GIFTS AS WELL
AS REWARDING LOYAL SERVICE.

FOR THIS VISIT, THERE WERE AT
LEAST 300 HORSE AND CARTS
CARRYING JEWEL CHESTS, CLOTHES,
FURNITURE, FOOD, BEER AND EVEN
PLATES AND FURNITURE FROM HOUSE
TO HOUSE!





THOMAS DOLMAN



LADY DOLMAN



MAIDS LIKE ANNE WOULD HANG
LAVENDER IN CLOTHING CUPBOARDS
AND DRAWERS TO KEEP THEM
SMELLING GOOD.

CLOTHES DURING TUDOR TIMES
WERE A MEANS OF DISPLAYING HOW
WEALTHY A PERSON WAS.

RICH PEOPLE COULD AFFORD
CLOTHING MADE OF FINE WOOL,
LINEN OR SILK. SUCH CLOTHES
WOULD THEN BE DECORATED WITH
JEWELS AND EMBROIDERED WITH
GOLD THREAD.

IN CONTRAST, POOR PEOPLE WORE
SIMPLE, LOOSE-FITTING CLOTHES
MADE FROM WOOLLEN CLOTH.





IN TUDOR TIMES, PEOPLE ATE A LOT OF FRESH FOOD BECAUSE THERE WAS NO WAY OF STORING IT TO BE EATEN LATER. THERE WERE NO SUCH THINGS AS FREEZERS OR FRIDGES IN THOSE TIMES!

PEOPLE WOULD EAT WITH THEIR FINGERS, KNIVES AND SPOONS. FORKS WEREN'T USED UNTIL THE LATE 1590S.

SERVANTS LIKE HARRY WOULD BRING THE FOOD FROM THE KITCHENS TO SERVE THE FAMILY.





THE TUDOR GARDENS HAVE
BEEN LOST OVER TIME, BUT
THERE ARE STILL SIGNS OF IT.
THE RAISED TERRACES OR
TURFED WALLS THAT
SURROUND THE LAWNS
PROVIDE AN EXCELLENT
VIEWING POINT.

WHILST EXPLORING THE
GARDENS, YOU MAY SEE SOME
SQUIRRELS. THEY
PARTICULARLY LIKE THE
WALNUT TREE!

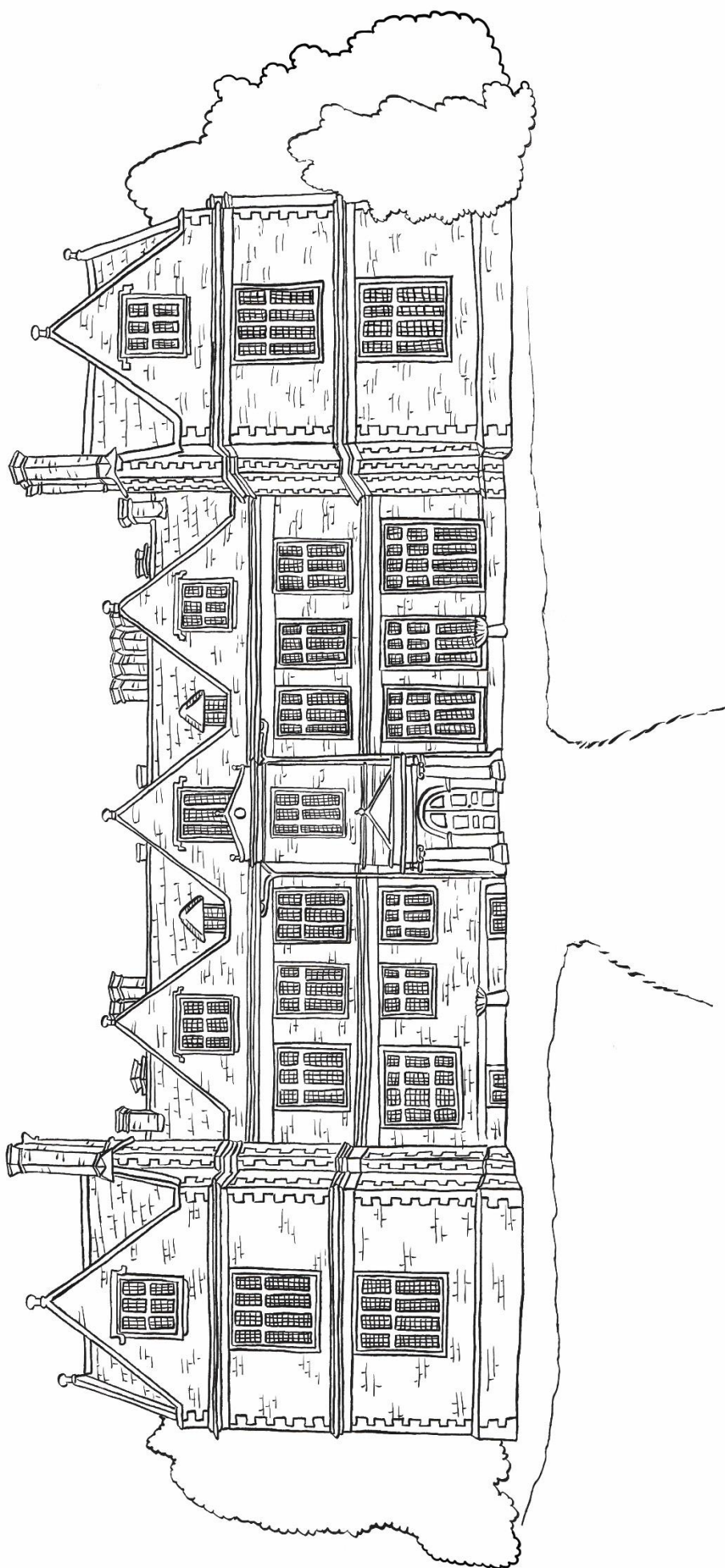




**NOT MUCH HAS CHANGED
TO THE EXTERIOR OF
SHAW HOUSE SINCE IT
WAS BUILT OVER 400
YEARS AGO.**

**THIS DRAWING SHOWS
WHAT THE HOUSE WOULD
HAVE LOOKED LIKE WHEN
IT WAS FIRST BUILT.**

**SEE IF YOU CAN SPOT
ANY CHANGES BETWEEN
THIS AND THE FIRST
DRAWING.**





**THANK YOU FOR
VISITING SHAW HOUSE!**

**WE LOOK FORWARD
TO WELCOMING YOU
AGAIN SOON**

Keep an eye on our website and social media pages for more
information on events and special open days.

www.westberkshireheritage.org.uk

shawhouse@westberks.gov.uk

01635 279279

