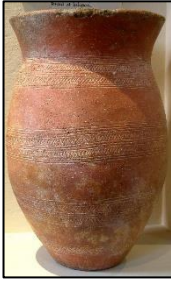


Colour in a beaker



This beaker dates from the Bronze Age. It was found by chance in 1935 by workmen digging in sand near Inkpen. It was sitting inside an unusual four-footed bowl. This had helped protect it, and it is most likely that they had accompanied a human burial, but no trace of the body was recorded.

Using felt tip pens or colouring pencils, colour in the beaker.

