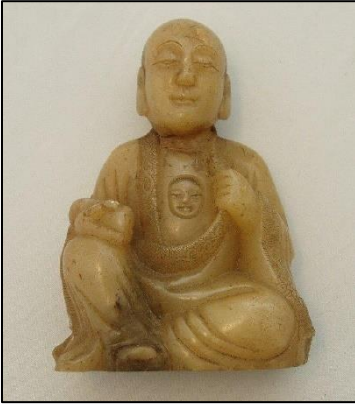


## Colour in a figurine



The Museum has this figurine on display in the special exhibition, Cabinets of Curiosity.

The figurine is made from jade, a gemstone, and is of a Buddhist monk sitting cross-legged. The figurine is from China. Buddhism, a religion, was first brought to China somewhere around 500 AD. It is thought to have come from India and spanned Central Asia along the 'Silk Road', which was an ancient network of trade and culture routes that connected the East to the West.

Using felt tip pens or colouring pencils, colour in the jade figurine.

