

WEST BERKSHIRE  
**MUSEUM**

# LIVES & LANDSCAPE

## Trail

FOLLOW MUSEUM DRAGON  
IGNITE (IGGY FOR SHORT)  
AROUND THE LIVES AND  
LANDSCAPE EXHIBITION  
ON THE GROUND FLOOR OF  
THE MUSEUM. HE WANTS TO  
SHOW YOU SOME AMAZING  
OBJECTS FROM WEST  
BERKSHIRE'S PAST.



**LOTTERY FUNDED**



**West Berkshire**  
COUNCIL

# GEOLOGY OF WEST BERKSHIRE

1

DO YOU SEE IGGY? HE IS  
WAITING FOR YOU IN ROOM 1.

*I'm on the  
activity trolley  
in this room!*



IGGY IS READY TO GO! LOOK OUT FOR HIS CLAW PRINTS IN THIS  
TRAIL AND USE THE CLUES TO FIND THE MUSEUM OBJECTS AND  
LEARN SOME FUN FACTS.

STAY IN ROOM 1

2

FIND THE FOSSILS OF SOME  
LONG DEAD SEA CREATURES...

*How many  
different types  
of sea creature  
are there?*



*Did you know  
that the word  
fossil comes from  
the Latin word  
fossilis which  
means 'dug up'?*

3

FOLLOW IGGY  
TO ROOM 2.

## STONE AGE

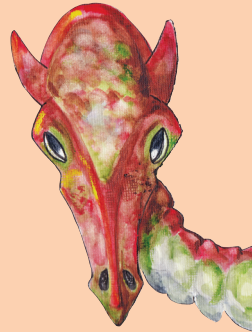
...AND NOW SPOT A STONE AGE HAND AXE  
WHICH WILL LOOK SIMILAR TO THIS...

DID YOU KNOW THESE HAND  
AXES ARE MADE FROM STONE  
BY A PROCESS CALLED FLINT  
KNAPPING? A PIECE OF  
STONE WOULD BE SHAPED  
USING ANOTHER STONE CALLED  
A HAMMERSTONE.



What was  
I used  
for?

WHAT TYPE OF STONE ARE THESE HAND AXES MADE FROM?  
STILL IN ROOM 2.



## BRONZE & IRON AGES

4

BEING A DRAGON, IGGY CAN SENSE TREASURE. CAN YOU FIND THE  
BRONZE AND IRON AGE GOLD OBJECTS THAT IGGY CAN SENSE?  
TICK WHEN YOU HAVE FOUND THEM THEN LABEL WHAT THEY ARE.



DID YOU KNOW THE BRONZE AND IRON AGES ARE NAMED AFTER THEIR  
PREFERRED MATERIAL FOR MAKING TOOLS AND WEAPONS, ALTHOUGH THEY  
BOTH USED PRECIOUS METALS SUCH AS GOLD TO MAKE JEWELLERY AND  
HIGH VALUE COINS?

## ROMANS & ANGLO SAXONS

5

IGGY WANTS TO EXPLORE THE SHINY RED POTTERY IN THE ROMANS CASE. CAN YOU SEE IT?

*What is this shiny red pottery called?*



DID YOU KNOW THAT THIS POTTERY IS OFTEN DECORATED WITH HUMAN, ANIMAL OR FLORAL FIGURES AS WELL AS THE ROMAN GODS AND GEOMETRIC SHAPES? WHAT DECORATION CAN YOU SEE HERE?

6

...AND ANGLO SAXON OBJECTS. OH NO, THERE IS MORE JEWELLERY HERE THAT IGGY WILL WANT TO ADD TO HIS TREASURE HOARD. FIND IT BEFORE IGGY!

*What am I and what makes me so beautiful?*



DID YOU KNOW THAT THE ANGLO SAXONS WERE MADE UP OF THREE TRIBES FROM EUROPE CALLED THE ANGLES, SAXONS AND JUTES? THE TWO LARGEST WERE THE ANGLES AND SAXONS MAKING THE ANGLO SAXONS.

REMAIN IN ROOM 2.

## TUDORS AND ENGLISH CIVIL WAR

7

IGGY HAS FOUND HIS FRIEND JOHN WINCHCOMBE (ALSO CALLED JACK OF NEWBURY). THEY HAVE LOST THE LOOM USED TO WEAVE CLOTH. CAN YOU FIND IT?



*What material  
did I use to  
make cloth?*



DID YOU KNOW  
THAT JACK OF NEWBURY  
MADE HIS FORTUNE  
THROUGH THE CLOTH TRADE?

DISCOVER A HELMET WORN BY A  
HORSE SOLDIER (CAVALRY) DURING  
THE ENGLISH CIVIL WAR.

8



*I am called a  
three-barred or  
lobster pot helmet.  
Can you see how I  
resemble a  
lobster?*

DID YOU KNOW TWO BATTLES  
WERE FOUGHT AT NEWBURY  
DURING THE ENGLISH CIVIL WAR?





IGGY IS STILL HOVERING IN ROOM 2.

## NEWBURY COAT AND STAGECOACHING



9

IGGY IS LOOKING  
FOR THE NEWBURY  
COAT. CAN YOU  
HELP HIM?

*In this case  
are the tools  
that were  
used to make  
the Newbury  
Coat...*



DID YOU KNOW THAT THE CHALLENGE IN 1811 WAS TO MAKE A COAT  
FROM BEGINNING (SHEARING THE SHEEP) TO END (WEARING THE COAT) IN  
ONE DAY. IT WAS WON AND THE CHALLENGE HAS BEEN RE-RUN SINCE.



8

IGGY REMEMBERS THAT BEFORE CARS AND TRAINS  
THE FASTEST WAY TO TRAVEL OVER LAND WAS BY  
STAGECOACH – NOT THAT IT WOULD BE FAST TO US!  
SPOT A RHYME ABOUT ONE OF THE COACHING INNS  
(WHERE A STAGECOACH WOULD HAVE STOPPED).



*What is a  
stagecoach?*



DID YOU KNOW THAT IN 1795 LOCAL MAGISTRATES MET IN THE GEORGE  
AND PELICAN INN TO TALK ABOUT BRINGING IN SOMETHING CALLED THE  
SPEENHAMLAND SYSTEM, WHICH WAS A WAY OF HELPING THE POOR BY  
PROVIDING THE COST OF BREAD?

FOLLOW IGGY TO ROOM 3.

11

CAN YOU SPOT THIS  
WOODEN BOX?

Who used me  
to clean the  
fireplaces of  
big houses?

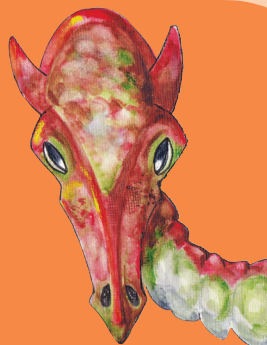


12

IGGY HAS WANDERED INTO ROOM 4. HE HAS FOUND SOME OBJECTS  
TO DO WITH WAR AND PROTEST.

TICK WHEN YOU  
FIND EACH ONE AND  
SAY WHAT IT IS

## WAR AND PROTEST



# KENNET AND AVON CANAL

13

LOOK AROUND ROOM 4 FOR THE BLUE PROGRAMME (BOOKLET) FOR THE CRAFTY CRAFT RACE 1983. TICK WHEN YOU HAVE FOUND IT.

The Crafty Craft race is a boat race run annually on the canal between Kintbury and Newbury



DID YOU KNOW THAT THE KENNET AND AVON CANAL THAT RUNS FROM BRISTOL TO READING THROUGH NEWBURY IS 87 MILES LONG AND WAS BUILT BETWEEN 1794 AND 1810? IT WAS BUILT TO TRANSPORT GOODS BUT THE ARRIVAL OF THE RAILWAY SAW IT GRADUALLY FALL INTO DISUSE. IN MORE RECENT TIMES IT HAS BEEN REOPENED AND IS NOW USED FOR PLEASURE.

WELL DONE FOR KEEPING UP WITH IGGY!



Goodbye.  
Come and visit me again!

YOU CAN EXPLORE THE REST OF THE MUSEUM AND FIND MORE AMAZING OBJECTS AND FUN FACTS.